

# ANNUAL WATER QUALITY REPORT

Reporting Year 2025



*Presented By*  
**Water Works District No. 3  
of Rapides Parish**

PWS ID#: LA1079017

## Our Commitment

We are pleased to present to you this year's annual water quality report. This report is a snapshot of last year's water quality covering all testing performed between January 1 and December 31, 2025. Included are details about your sources of water, what it contains, and how it compares to standards set by regulatory agencies. Our constant goal is to provide you with a safe and dependable supply of drinking water. We want you to understand the efforts we make to continually improve the water treatment process and protect our water resources. We are committed to ensuring the quality of your water and providing you with this information because informed customers are our best allies.



Below are some of the completed and ongoing projects from the past year. These improvements are necessary to keep up with growth in the district and maintain the high quality of water we provide to our customers.

In the past year, we replaced the media in all four filters at the purification plant. These filters are one of the final steps in the treatment process before water enters the distribution system. The previous filter media lasted more than 20 years before needing replacement.

As part of our ongoing efforts to improve the reliability and capacity of the water distribution system, we are currently in the design phase of a new 14-inch trunk main that will connect water wells near Esler Field to Highway 165 in Kingsville. This new line will replace the aging eight-inch water main currently in service and ensure customers have an adequate and dependable water supply for years to come.

We are also nearing completion of the rehabilitation of the Kingsville elevated water tower, which many customers may have noticed while passing through the area. Elevated water towers typically require rehabilitation every 15 years to maintain the protective coating system and ensure continued compliance with Louisiana Department of Health standards.

## Where Does My Water Come From?

Our primary water sources consist of four groundwater wells and a surface water purification plant that is fed by Big Creek, near Pollock.

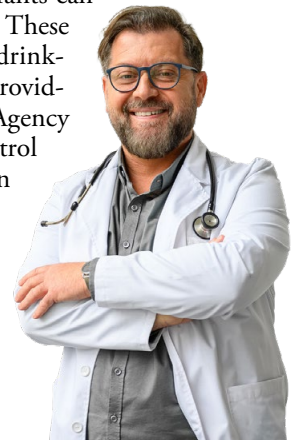
### Our Report Card

The Louisiana Department of Health issues letter grades reflective of community water system quality and performance and determined based on seven standards evaluating the infrastructure, accountability, and overall health risk of drinking water to consumers. More information on these grades can be found at [ldh.la.gov/watergrade](http://ldh.la.gov/watergrade).

We are proud to say that our grade is A, with a score of 105/100, or 105 percent.

## Important Health Information

Some people may be more vulnerable to contaminants in drinking water than the general population. Immunocompromised persons such as persons with cancer undergoing chemotherapy, persons who have undergone organ transplants, people with HIV/AIDS or other immune system disorders, some elderly, and infants can be particularly at risk from infections. These people should seek advice about drinking water from their health-care providers. U.S. Environmental Protection Agency (U.S. EPA)/Centers for Disease Control and Prevention (CDC) guidelines on appropriate means to lessen the risk of infection by *Cryptosporidium* and other microbial contaminants are available from the Safe Drinking Water Hotline (800-426-4791) or [epa.gov/safewater](http://epa.gov/safewater).



## Source Water Assessment

We now have a Source Water Protection Plan available from our office that provides more information, such as potential sources of contamination to the water supply. This assessment includes a delineated area around our wells or intakes through which contaminants, if present, could migrate and reach our source water. It also includes an inventory of potential sources of contamination within these delineated areas and a determination of the water supply's susceptibility to contamination by the identified potential sources. The overall susceptibility rating for our water source is medium. A medium susceptibility rating does not imply poor water quality; rather, it signifies the system's potential to become contaminated within the assessment area.

## QUESTIONS?

For more information about this report, or for any questions regarding your drinking water, please contact Jimmy R. French, General Manager, at (318) 640-1379.

Please visit our website at [wwd3.com](http://wwd3.com). Customers can view or pay their bill, set up new service, and sign up for email updates online. Payments may still be made by phone with a credit card or mailed to P.O. Box 580, Tioga LA 71477. There is a 5 percent transaction fee for all credit card payments made by phone or online. This fee is charged by the credit card processing company, not by WWD3. Customers may still pay by check or in person with cash at no additional charge.

## Substances That Could Be in Water

The sources of drinking water (both tap water and bottled water) include rivers, lakes, streams, ponds, reservoirs, springs, and wells. As water travels over the surface of the land or through the ground, it dissolves naturally occurring minerals and, in some cases, radioactive material and can pick up substances resulting from the presence of animals or from human activity. Contaminants that may be present in source water include:

Microbial Contaminants, such as viruses and bacteria, which may come from sewage treatment plants, septic systems, agricultural livestock operations, and wildlife.

Inorganic Contaminants, such as salts and metals, which can occur naturally in the soil or groundwater or may result from urban stormwater runoff, industrial or domestic wastewater discharges, oil and gas production, mining, or farming.

Pesticides and Herbicides, which may come from a variety of sources such as agriculture, urban stormwater runoff, and residential uses.

Organic Chemical Contaminants, including synthetic and volatile organic chemicals, which are by-products of industrial processes and petroleum production and can also come from gas stations, urban stormwater runoff, and septic systems.

Radioactive Contaminants, which can occur naturally or be the result of oil and gas production and mining activities.

To ensure that tap water is safe to drink, the U.S. EPA prescribes regulations that limit the amount of certain contaminants in water provided by public water systems. Food and Drug Administration regulations establish limits for contaminants in bottled water, which must provide the same protection for public health.

Drinking water, including bottled water, may reasonably be expected to contain at least small amounts of some contaminants. The presence of contaminants does not necessarily mean that water poses a health risk. More information about contaminants and potential health effects can be obtained by calling the Safe Drinking Water Hotline (800-426-4791) or visiting [epa.gov/safewater](http://epa.gov/safewater).

## Community Participation

You are invited to participate in our public forum and voice your concerns about your drinking water. We meet the second and fourth Tuesday of each month at 10:00 a.m. at the Water Works office, 1306 Third Street, Pineville. Call (318) 640-1379 for additional information.

## Lead in Home Plumbing

Lead can cause serious health problems, especially for pregnant women and young children. Lead in drinking water is primarily from materials and components associated with service lines and home plumbing. Water Works District No. 3 of Rapides Parish is responsible for providing high-quality drinking water and removing lead pipes but cannot control the variety of materials used in plumbing components in your home. You share the responsibility for protecting yourself and your family from the lead in your home plumbing. You can take responsibility by identifying and removing lead materials within your home plumbing and taking steps to reduce your family's risk. Before drinking tap water, flush your pipes for several minutes by running your tap, taking a shower, or doing laundry or a load of dishes. You can also use a filter certified by an American National Standards Institute-accredited certifier to reduce lead in drinking water. If you are concerned about lead and wish to have your water tested, contact Water Works District No. 3 at (318) 640-1379. Information on lead in drinking water, testing methods, and steps you can take to minimize exposure is available at [epa.gov/safewater/lead](http://epa.gov/safewater/lead).

To address lead in drinking water, public water systems were required to develop and maintain an inventory of service line materials by October 16, 2024. Developing an inventory and identifying the location of lead service lines (LSL) is the first step for beginning LSL replacement and protecting public health. A copy of the lead service inventory may be picked up at our office at 1306 Third Street, Pineville. We're proud to say that no lead service lines were present in our distribution system. Please contact us if you would like more information about the inventory or any lead sampling that has been done.

## Tap vs. Bottled

Thanks in part to aggressive marketing, the bottled water industry has successfully convinced us all that water purchased in bottles is a healthier alternative to tap water. However, according to a four-year study conducted by the Natural Resources Defense Council (NRDC), bottled water is not necessarily cleaner or safer than most tap water. In fact, about 40 percent of bottled water is actually just tap water, according to government estimates.

The Food and Drug Administration (FDA) is responsible for regulating bottled water, but these rules allow for less rigorous testing and purity standards than those required by the U.S. EPA for community tap water. For instance, the high mineral content of some bottled waters makes them unsuitable for babies and young children. Further, the FDA completely exempts bottled water that's packaged and sold within the same state, which accounts for about 70 percent of all bottled water sold in the United States.

People spend 10,000 times more per gallon for bottled water than they typically do for tap water. If you get your recommended eight glasses a day from bottled water, you could spend up to \$1,400 annually. The same amount of tap water would cost about 49 cents. Even if you installed a filter device on your tap, your annual expenditure would be far less than what you'd pay for bottled water.

For a detailed discussion on the NRDC study results, visit [goo.gl/Jxb6xG](http://goo.gl/Jxb6xG).



## What's a Cross-Connection?

Cross-connections that contaminate drinking water distribution lines are a major concern. A cross-connection is formed at any point where a drinking water line connects to equipment (boilers), systems containing chemicals (air-conditioning systems, fire sprinkler systems, irrigation systems), or water sources of questionable quality. Cross-connection contamination can occur when the pressure in the equipment or system is greater than the pressure inside the drinking water line (backpressure). Contamination can also occur when the pressure in the drinking water line drops due to fairly routine occurrences (main breaks, heavy water demand), causing contaminants to be sucked out from the equipment and into the drinking water line (backsiphonage).

Outside water taps and garden hoses tend to be the most common sources of cross-connection contamination at home. The garden hose creates a hazard when submerged in a swimming pool or attached to a chemical sprayer for weed killing. Garden hoses that are left lying on the ground may be contaminated by fertilizers, cesspools, or garden chemicals. Improperly installed valves in your toilet could also be a source of cross-connection contamination.

Community water supplies are continuously jeopardized by cross-connections unless appropriate valves, known as backflow prevention devices, are installed and maintained. We have surveyed industrial, commercial, and institutional facilities in the service area to make sure that potential cross-connections are identified and eliminated or protected by a backflow preventer. We also inspect and test backflow preventers to make sure that they provide maximum protection.

For more information on backflow prevention, contact the Safe Drinking Water Hotline at (800) 426-4791.

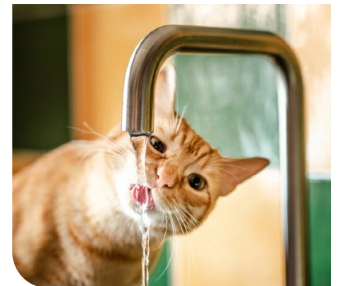
## Naturally Occurring Bacteria

The simple fact is bacteria and other microorganisms inhabit our world. They can be found all around us: in our food; on our skin; in our bodies; and, in the air, soil, and water. Some are harmful to us and some are not. Coliform bacteria are common in the environment and generally not harmful themselves. The presence of this bacterial form in drinking water is a concern because it indicates that the water may be contaminated with other organisms that can cause disease. Throughout the year, we tested many water samples for coliform bacteria. In that time, none of the samples came back positive for the bacteria.

Federal regulations require that public water that tests positive for coliform bacteria must be further analyzed for fecal coliform bacteria. Fecal coliform are present only in human and animal waste. Because these bacteria can cause illness, it is unacceptable for fecal coliform to be present in water at any concentration. Our tests indicate no fecal coliform is present in our water.

## Hard vs. Soft Water

Hard water contains higher levels of naturally occurring minerals, primarily calcium and magnesium. These minerals are not harmful to human health and can even contribute beneficial nutrients. However, hard water can cause scale buildup in pipes, appliances, and fixtures. "Soft" water has lower mineral content and allows soap to lather more easily. It also helps extend the life of water heaters, washing machines, and plumbing fixtures. Hardness levels vary widely depending on local geology and groundwater conditions. Some households choose to install water softeners to reduce scaling and improve appliance efficiency. It is important to note that water hardness is a quality issue, not a safety concern. Both hard and soft water supplied by public water systems meet all health-based drinking water standards.



## What Causes the Pink Stain on Bathroom Fixtures?

The reddish-pink color frequently noted in bathrooms on shower stalls, tubs, tile, toilets, sinks, and toothbrush holders and on pets' water bowls is caused by the growth of the bacterium *Serratia marcescens*. *Serratia* is commonly isolated from soil, water, plants, insects, and vertebrates (including humans). The bacteria can be introduced into the house through any of these sources. The bathroom provides a perfect environment (moist and warm) for bacteria to thrive.

The best solution to this problem is to clean and dry these surfaces to keep them free from bacteria. Chlorine-based compounds work best, but keep in mind that abrasive cleaners may scratch fixtures, making them more susceptible to bacterial growth. Chlorine bleach can be used periodically to disinfect the toilet and help eliminate the occurrence of the pink residue. Keeping bathtubs and sinks wiped down using a solution that contains chlorine will also help to minimize its occurrence. *Serratia* will not survive in chlorinated drinking water.



## Water Treatment Process

The treatment process consists of a series of steps. First, raw water is drawn from our water source and sent to an aerator, which allows for oxidation of iron. The water then goes to a mixing tank where a polymer and soda ash are added. The addition of these substances causes small particles called floc to adhere to one another, making them heavy enough to settle into a basin from which sediment is removed. At this point, the water is filtered through layers of fine coal and silicate sand. As smaller suspended particles are removed, turbidity disappears and clear water emerges.

Chloramines are added as a precaution to remove any bacteria that may still be present. (We carefully monitor the amount of chloramines, adding the lowest quantity necessary to protect the safety of your water without compromising taste.) Finally, soda ash (used to adjust the final pH and alkalinity) is added.

## Why We Test So Often

Drinking water is one of the most closely monitored resources in the United States. Water systems regularly test for bacteria, disinfectants, metals, organic chemicals, radioactive substances, and many other contaminants. Some tests are performed daily, while others are conducted weekly, monthly, quarterly, or annually, depending on regulatory requirements and system size. Microbiological testing for bacteria such as coliforms ensures that disinfection is working properly. Turbidity monitoring confirms effective filtration. Chemical testing verifies that treatment processes remain optimized. All certified laboratories must meet strict quality assurance requirements to ensure accurate results. When results approach regulatory limits, corrective actions are taken immediately.



## Fixtures With Green Stains

A green or blue-green stain on kitchen or bathroom fixtures is caused by tiny amounts of copper that dissolve in your home's copper plumbing system when the water sits unused overnight. Copper staining may be the result of a leaky faucet or a faulty toilet flush valve, so be sure your plumbing is in good working order.

Copper stains may also be caused by overly hot tap water. Generally speaking, you should maintain your water temperature at a maximum of 120 degrees Fahrenheit. You should consult the owner's manual for your heater or check with your plumber to determine your current heat setting. Lowering your water temperature will reduce the staining problem and save you money on your energy bill.

Also keep in mind that a tap that is used often throughout the day usually will not produce copper stains, so if you flush the tap for a minute or so before using the water for cooking or drinking, copper levels will be reduced.

## Tip Top Tap

The most common signs that your faucet or sink is affecting the quality of your drinking water are discolored water, sink or faucet stains, a buildup of particles, unusual odors or tastes, and a reduced flow of water. The solutions to these problems may be in your hands.

### Kitchen Sink and Drain

Handwashing, soap scum buildup, and the handling of raw meats and vegetables can contaminate your sink. Clogged drains can lead to unclean sinks and backed-up water in which bacteria (i.e., pink or black slime growth) can grow and contaminate the sink area and faucet, causing a rotten egg odor. Disinfect and clean the sink and drain area regularly and flush with hot water.

### Faucets, Screens, and Aerators

Chemicals and bacteria can splash and accumulate on the faucet screen and aerator, which are located on the tip of faucets and can collect particles like sediment and minerals, resulting in a decreased flow from the faucet. Clean and disinfect the aerators or screens on a regular basis.

Check with your plumber if you find particles in the faucet screen, as they could be pieces of plastic from the hot water heater dip tube. Faucet gaskets can break down and cause black, oily slime. If you find this slime, replace the faucet gasket with a higher-quality product. White scaling or hard deposits on faucets and showerheads may be caused by water with high levels of calcium carbonate. Clean these fixtures with vinegar or use water softening to reduce the calcium carbonate levels for the hot water system.



### Water Filtration/Treatment Devices

A smell of rotten eggs can be a sign of bacteria on the filters or in the treatment system. The system can also become clogged over time, so regular filter replacement is important. (Remember to replace your refrigerator filter!)



## Chloramines

Imported and locally produced drinking water is treated with chloramines, a combination of chlorine and ammonia, as a disinfectant. Chloramines effectively eliminate bacteria and other microorganisms that may cause disease. Compared to chlorine alone, chloramines last longer in the distribution system, produce fewer disinfection by-products, and have little to no odor when used properly.

### Precautions:

- **Kidney Dialysis Patients:** Individuals using kidney dialysis machines should consult their health-care provider regarding appropriate water treatment.
- **Fish and Aquatic Life:** Chloramines are toxic to fish and other aquatic organisms. Customers maintaining fishponds, tanks, or aquariums should adjust water treatment methods accordingly.

For more information, visit [epa.gov/dwreginfo/chloramines-drinking-water](http://epa.gov/dwreginfo/chloramines-drinking-water).

## FOG (Fats, Oils, and Grease)

You may not be aware of it, but every time you pour fat, oil, or grease (FOG) down your sink (e.g., bacon grease), you are contributing to a costly problem in the sewer collection system. FOG coats the inner walls of the plumbing in your house as well as the walls of underground piping throughout the community. Over time, these greasy materials build up and form blockages in pipes, which can lead to wastewater backing up into parks, yards, streets, and storm drains. These backups allow FOG to contaminate local waters, including drinking water. Exposure to untreated wastewater is a public health hazard. FOG discharged into septic systems and drain fields can also cause malfunctions, resulting in more frequent tank pump-outs and other expenses.

Communities spend billions of dollars every year to unplug or replace grease-blocked pipes, repair pump stations, and clean up costly and illegal wastewater spills. Here are some tips that you and your family can follow to help maintain a well-run system now and in the future:

### NEVER:

- Pour FOG down the house or storm drains.
- Dispose of food scraps by flushing them.
- Use the toilet as a wastebasket.



### ALWAYS:

- Scrape and collect FOG into a waste container such as an empty coffee can, and dispose of it with your garbage.
- Place food scraps in waste containers or garbage bags for disposal with solid wastes.
- Place a wastebasket in each bathroom for solid wastes like disposable diapers, creams and lotions, and personal hygiene products, including nonbiodegradable wipes.

## How Long Can I Store Drinking Water?

The disinfectant in drinking water will eventually dissipate even in a closed container. If that container housed bacteria prior to filling up with the tap water the bacteria may continue to grow once the disinfectant has dissipated. Some experts believe that water can be stored up to six months before needing to be replaced. Refrigeration will help slow the bacterial growth.

## Benefits of Chlorination

Disinfection, a chemical process used to control disease-causing microorganisms by killing or inactivating them, is unquestionably the most important step in drinking water treatment. By far, the most common method of disinfection in North America is chlorination.

Before communities began routinely treating drinking water with chlorine (starting with Chicago and Jersey City in 1908), cholera, typhoid fever, dysentery, and hepatitis A killed thousands of U.S. residents annually. Drinking water chlorination and filtration have helped to virtually eliminate these diseases in the U.S. Significant strides in public health are directly linked to the adoption of drinking water chlorination. In fact, the filtration of drinking water and the use of chlorine are probably the most significant public health advancements in human history.



### How chlorination works:

- **Potent Germicide Reduction** of many disease-causing microorganisms in drinking water to almost immeasurable levels.
- **Taste and Odor Reduction** of many disagreeable tastes and odors from foul-smelling algae secretions, sulfides, and decaying vegetation.
- **Biological Growth Elimination** of slime bacteria, molds, and algae that commonly grow in water supply reservoirs, on the walls of water mains, and in storage tanks.
- **Chemical Removal** of hydrogen sulfide (which has a rotten egg odor), ammonia, and other nitrogenous compounds that have unpleasant tastes and hinder disinfection. It also helps to remove iron and manganese from raw water.

## What Are PPCPs?

When cleaning out your medicine cabinet, what do you do with your expired pills? Many people flush them down the toilet or toss them into the trash. Although this seems convenient, these actions could threaten our water supply.

Recent studies are generating a growing concern over pharmaceuticals and personal care products (PPCPs) entering water supplies. PPCPs include human and veterinary drugs (prescription or over-the-counter) and consumer products, such as cosmetics, fragrances, lotions, sunscreens, and house cleaning products. From 2006 to 2010, the number of U.S. prescriptions increased 12 percent to a record 3.7 billion, while nonprescription drug purchases held steady around 3.3 billion. Many of these drugs and personal care products do not biodegrade and may persist in the environment for years.

The best and most cost-effective way to ensure safe water at the tap is to keep our source waters clean. Never flush unused medications down the toilet or sink. Instead, check to see if the pharmacy where you made your purchase accepts medications for disposal, or contact your local health department for information on proper disposal methods and drop-off locations. You can also visit [goo.gl/aZPgeB](http://goo.gl/aZPgeB) to find more information about disposal locations in your area.

## Table Talk

Get the most out of the Testing Results data table with these simple suggestions. In less than a minute, you will know all there is to know about your water.



- For each substance listed, compare the value in the Amount Detected column against the value in the MCL (or AL or SMCL) column. If the Amount Detected value is smaller, your water meets the health and safety standards set for the substance.
- Verify that there were no violations of the state or federal standards in the Violation column. If there was a violation, you will see a detailed description of the event in this report.
- If there is an ND or a less-than symbol ( <math><math>- The Range column displays the lowest and highest sample readings. NA means only a single sample was taken to test for the substance (assuming there is a reported value in the Amount Detected column).
- If there is sufficient evidence to indicate from where the substance originates, it will be listed under Typical Source.

## Why can tap water have a taste?

Taste in drinking water is usually related to naturally occurring minerals, disinfectants, or seasonal changes in source water. While these characteristics may affect taste, they do not typically indicate a health risk.

## Why is water sometimes called the “original energy drink”?

Water helps regulate body temperature, supports digestion, and keeps joints moving—without sugar, calories, or caffeine.

## Can weather affect drinking water quality?

Heavy rain, drought, or seasonal changes can influence source water conditions. Water systems adjust treatment processes as needed to maintain water quality during changing environmental conditions.

## Why is maintaining water infrastructure important?

Pipes, pumps, and treatment facilities are critical for delivering safe drinking water. Regular maintenance and upgrades help prevent leaks, breaks, and service disruptions.

## What can customers do to help protect water quality?

Customers can help by reporting leaks, avoiding cross-connections, maintaining household plumbing, and staying informed through their annual water quality report.



## Count on Us

Delivering high-quality drinking water to our customers involves far more than just pushing water through pipes. Water treatment is a complex, time-consuming process. Because tap water is highly regulated by state and federal laws, water treatment plant and system operators must be licensed and are required to commit to long-term, on-the-job training before becoming fully qualified. Our licensed water professionals have a basic understanding of a wide range of subjects, including mathematics, biology, chemistry, and physics. Some of the tasks they complete on a regular basis include:

- Operating and maintaining equipment to purify and clarify water.
- Monitoring and inspecting machinery, meters, gauges, and operating conditions.
- Conducting tests and inspections on water and evaluating the results.
- Maintaining optimal water chemistry.
- Applying data to formulas that determine treatment requirements, flow levels, and concentration levels.
- Documenting and reporting test results and system operations to regulatory agencies.
- Serving our community through customer support, education, and outreach.

So the next time you turn on your faucet, think of the skilled professionals who stand behind each drop.

## Water Main Flushing

Distribution mains (pipes) convey water to homes, businesses, and hydrants in your neighborhood. The water entering distribution mains is of very high quality; however, water quality can deteriorate in areas of the distribution mains over time. Water main flushing is the process of cleaning the interior of water distribution mains by sending a rapid flow of water through them.

Flushing maintains water quality in several ways. For example, flushing removes sediments like iron and manganese. Although iron and manganese do not pose health concerns, they can affect the taste, clarity, and color of the water. Additionally, sediments can shield microorganisms from the disinfecting power of chlorine, contributing to the growth of microorganisms within distribution mains. Flushing helps remove stale water and ensures the presence of fresh water with sufficient dissolved oxygen and disinfectant levels and an acceptable taste and smell.

During flushing operations in your neighborhood, some short-term deterioration of water quality, though uncommon, is possible. You should avoid tap water for household uses at that time. If you do use the tap, allow your cold water to run for a few minutes at full velocity before use, and avoid using hot water to prevent sediment accumulation in your hot water tank.

Please contact us if you have any questions or if you would like more information on our water main flushing schedule.



## Disinfection By-Products Explained

Disinfection by-products, commonly called DBPs, form when disinfectants such as chlorine react with naturally occurring organic matter in water. Two of the most commonly monitored DBPs are total trihalomethanes (TTHMs) and haloacetic acids (HAA5). While disinfectants play a vital role in protecting public health by killing harmful bacteria and viruses, these reactions can produce small amounts of DBPs. Long-term exposure to elevated levels of DBPs has been associated with increased health risks, which is why strict federal standards regulate these substances.



We carefully balance the need for effective disinfection with the control of DBP formation. This includes optimizing treatment processes, managing natural organic matter, maintaining proper disinfectant levels, and adjusting system operations seasonally. Customers can help reduce DBP exposure at home by allowing tap water to run briefly before use, using certified carbon filters, and refrigerating drinking water to allow some DBPs to dissipate.

Disinfection remains one of the most important public health achievements in modern history. Water utilities continuously work to ensure that water is both microbiologically safe and compliant with DBP regulations.



## Test Results

Our water is monitored for many different kinds of substances on a very strict sampling schedule, and the water we deliver must meet specific health standards. Here, we only show those substances that were detected in our water (a complete list of all our analytical results is available upon request). Remember that detecting a substance does not mean the water is unsafe to drink; our goal is to keep all detects below their respective maximum allowed levels.

The state recommends monitoring for certain substances less than once per year because the concentrations of these substances do not change frequently. In these cases, the most recent sample data is included, along with the year in which the sample was taken.

We participated in the fifth stage of the U.S. EPA's Unregulated Contaminant Monitoring Rule (UCMR5) program by performing additional tests on our drinking water. UCMR5 sampling benefits the environment and public health by providing the U.S. EPA with data on the occurrence of contaminants suspected to be in drinking water to determine if it needs to introduce new regulatory standards to improve drinking water quality. Unregulated contaminant monitoring data is available to the public, so please feel free to contact us if you are interested in obtaining that information. If you would like more information on the U.S. EPA's Unregulated Contaminant Monitoring Rule, please call the Safe Drinking Water Hotline at (800) 426-4791.

### REGULATED SUBSTANCES

				Water Works District No. 3 of Rapides Parish-Treated			
SUBSTANCE (UNIT OF MEASURE)	YEAR SAMPLED	MCL [MRDL]	MCLG [MRDLG]	AMOUNT DETECTED	RANGE LOW-HIGH	VIOLATION	TYPICAL SOURCE
Chloramines (ppm)	2025	[4]	[4]	2.4	0.06–5.0	No	Water additive used to control microbes
Chlorine Dioxide (ppb)	2025	[800]	[800]	0.12	ND–0.12	No	Water additive used to control microbes
Chlorite (ppm)	2025	1	0.8	0.510	0.160–0.510	No	By-product of drinking water disinfection
Gross Beta Particle Activity (pCi/L)	04/09/2025	50 <sup>2</sup>	0	1.99	NA–1.99	No	Decay of natural and human-made deposits
HAA5 [Donahue Ferry at Whittington] (ppb)	2025	60	0	16 <sup>3</sup>	2.16–36.6	No	By-product of drinking water disinfection
HAA5 [point of entry] (ppb)	2025	60	0	28 <sup>3</sup>	9.1–56.9	No	By-product of drinking water disinfection
HAA5 [Rifle Range Rd.] (ppb)	2025	60	0	20 <sup>3</sup>	8.4–41.8	No	By-product of drinking water disinfection
HAA5 [Tioga Rd. at Adams Dr.] (ppb)	2025	60	0	34 <sup>3</sup>	12.2–68.9	No	By-product of drinking water disinfection
Nitrate + Nitrite (ppm)	07/28/2025	10	10	0.3	0.1–0.3	No	Runoff from fertilizer use; Leaching from septic tanks, sewage; Erosion of natural deposits
TTHM [Donahue Ferry at Whittington] (ppb)	2025	80	0	37 <sup>3</sup>	1.42–40.7	No	By-product of drinking water chlorination
TTHM [Point of Entry] (ppb)	2025	80	0	11 <sup>3</sup>	4–21.1	No	By-product of drinking water chlorination
TTHM [Rifle Range Rd.] (ppb)	2025	80	0	37 <sup>3</sup>	12.6–46.3	No	By-product of drinking water chlorination
TTHM [Tioga Rd. at Adams Dr.] (ppb)	2025	80	0	16 <sup>3</sup>	5.6–20.8	No	By-product of drinking water chlorination
Turbidity <sup>1</sup> (NTU)	2025	TT	NA	0.167	NA	No	Soil runoff
Turbidity (lowest monthly percent of samples meeting limit)	2025	TT = 95% of samples meet the limit	NA	100	NA	No	Soil runoff

### Tap water samples were collected for lead and copper analyses from sample sites throughout the community

SUBSTANCE (UNIT OF MEASURE)	YEAR SAMPLED	AL	MCLG	AMOUNT DETECTED (90TH %ILE)	RANGE LOW-HIGH	SITES ABOVE AL/ TOTAL SITES	VIOLATION	TYPICAL SOURCE
Copper (ppm)	2023	1.3	1.3	0.2	ND–0.3	0/30	No	Corrosion of household plumbing systems; Erosion of natural deposits
Lead (ppb)	2023	15	0	ND	ND–6	0/30	No	Lead service lines; Corrosion of household plumbing systems, including fittings and fixtures; Erosion of natural deposits

## SECONDARY SUBSTANCES

			Water Works District No. 3 of Rapides Parish—Treated (2025)		Water Works District No. 3 of Rapides Parish—Source (2024)			
SUBSTANCE (UNIT OF MEASURE)	SMCL	MCLG	AMOUNT DETECTED	RANGE LOW-HIGH	AMOUNT DETECTED	RANGE LOW-HIGH	VIOLATION	TYPICAL SOURCE
Aluminum (ppb)	200	NA	0.57	NA–0.57	NA	NA	No	Erosion of natural deposits; Residual from some surface water treatment processes
Chloride (ppm)	250	NA	NA	NA	92	ND–92	No	Runoff/leaching from natural deposits
Iron (ppb)	300	NA	30	NA–30	20 <sup>4</sup>	ND–20 <sup>4</sup>	No	Leaching from natural deposits; Industrial wastes
Manganese (ppb)	50	NA	20	NA–20	NA	NA	No	Leaching from natural deposits
pH (units)	6.5–8.5	NA	5.21	NA–5.21	8.2 <sup>4</sup>	ND–8.2 <sup>4</sup>	No	Naturally occurring
Sulfate (ppm)	250	NA	20	NA–20	NA	NA	No	Runoff/leaching from natural deposits; Industrial wastes

## UNREGULATED SUBSTANCES

			Water Works District No. 3 of Rapides Parish—Treated (2025)		Water Works District No. 3 of Rapides Parish—Source (2024)			
SUBSTANCE (UNIT OF MEASURE)	AMOUNT DETECTED	RANGE LOW-HIGH	AMOUNT DETECTED	RANGE LOW-HIGH	TYPICAL SOURCE			
Hardness, Total [as CaCO <sub>3</sub> ] (ppm)	4.5	NA–4.5	NA	NA	NA			
Potassium (ppm)	1.2	NA–1.2	1.6 <sup>5</sup>	ND–1.6 <sup>5</sup>	NA			
Sodium (ppm)	39	NA–39	161.4 <sup>5</sup>	ND–161.4 <sup>5</sup>	NA			

<sup>1</sup> Turbidity is a measure of the cloudiness of the water. It is monitored because it is a good indicator of the effectiveness of the filtration system.

<sup>2</sup> The MCL is 4 millirems per year as an annual dose equivalent to the total body or any internal organ. The U.S. EPA uses 50 pCi/L as a screening level.

<sup>3</sup> Highest LRAA.

<sup>4</sup> Sampled in 2024.

<sup>5</sup> Sampled on April 3, 2024.



## Definitions

**90th %ile:** The levels reported for lead and copper represent the 90th percentile of the total number of sites tested. The 90th percentile is equal to or greater than 90% of our lead and copper detections.

**AL (Action Level):** The concentration of a contaminant which, if exceeded, triggers treatment or other requirements which a water system must follow.

**Herbicide:** Any chemical(s) used to control undesirable vegetation.

**LRAA (Locational Running Annual Average):** The average of sample analytical results for samples taken at a particular monitoring location during the previous four calendar quarters under the Stage 2 Disinfectants and Disinfection Byproducts Rule.

**MCL (Maximum Contaminant Level):** The highest level of a contaminant that is allowed in drinking water. MCLs are set as close to the MCLGs as feasible using the best available treatment technology.

**MCLG (Maximum Contaminant Level Goal):** The level of a contaminant in drinking water below which there is no known or expected risk to health. MCLGs allow for a margin of safety.

**MRDL (Maximum Residual Disinfectant Level):** The highest level of a disinfectant allowed in drinking water. There is convincing evidence that addition of a disinfectant is necessary for control of microbial contaminants.

**MRDLG (Maximum Residual Disinfectant Level Goal):** The level of a drinking water disinfectant below which there is no known or expected risk to health. MRDLGs do not reflect the benefits of the use of disinfectants to control microbial contaminants.

**NA:** Not applicable.

**ND (Not detected):** Indicates that the substance was not found by laboratory analysis.

**NTU (Nephelometric Turbidity Units):** Measurement of the clarity, or turbidity, of water. Turbidity in excess of 5 NTU is just noticeable to the average person.

**pCi/L (picocuries per liter):** A measure of radioactivity.

**Pesticide:** Generally, any substance or mixture of substances intended for preventing, destroying, repelling, or mitigating any pest.

**ppb (parts per billion):** One part substance per billion parts water (or micrograms per liter).

**ppm (parts per million):** One part substance per million parts water (or milligrams per liter).

**SMCL (Secondary Maximum Contaminant Level):** These standards are developed to protect aesthetic qualities of drinking water and are not health based.

**TT (Treatment Technique):** A required process intended to reduce the level of a contaminant in drinking water.

